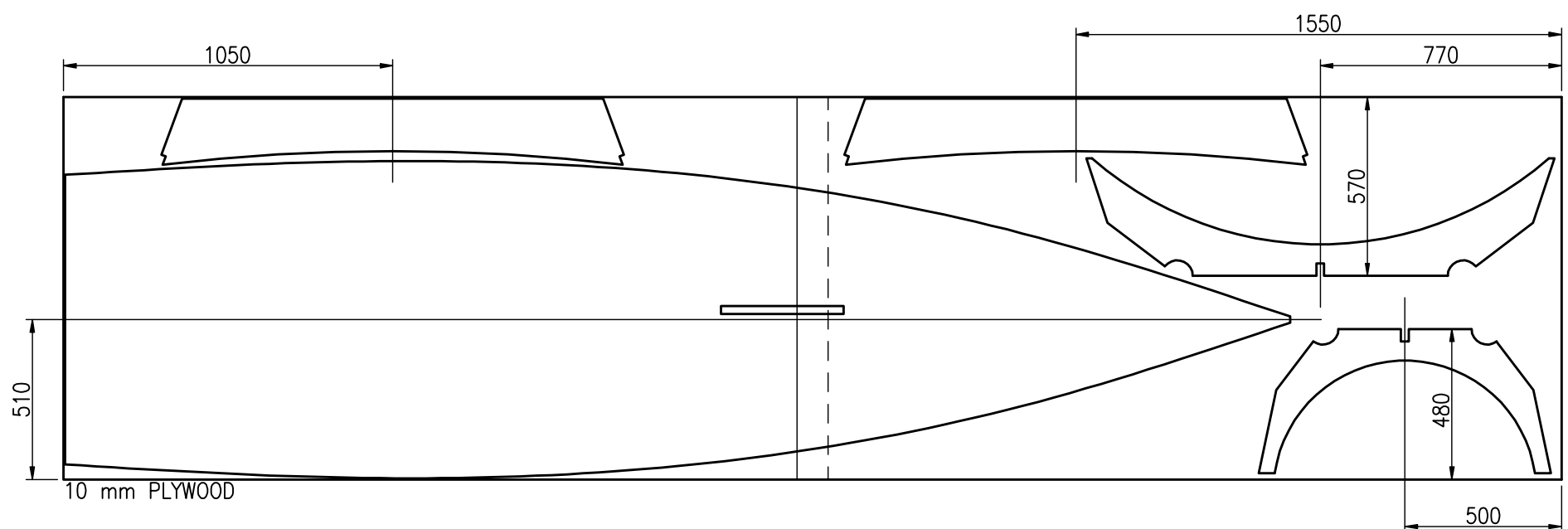
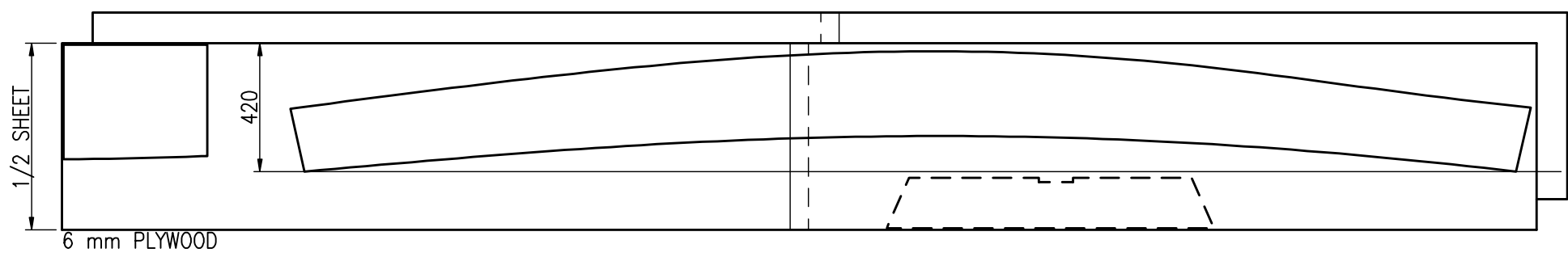
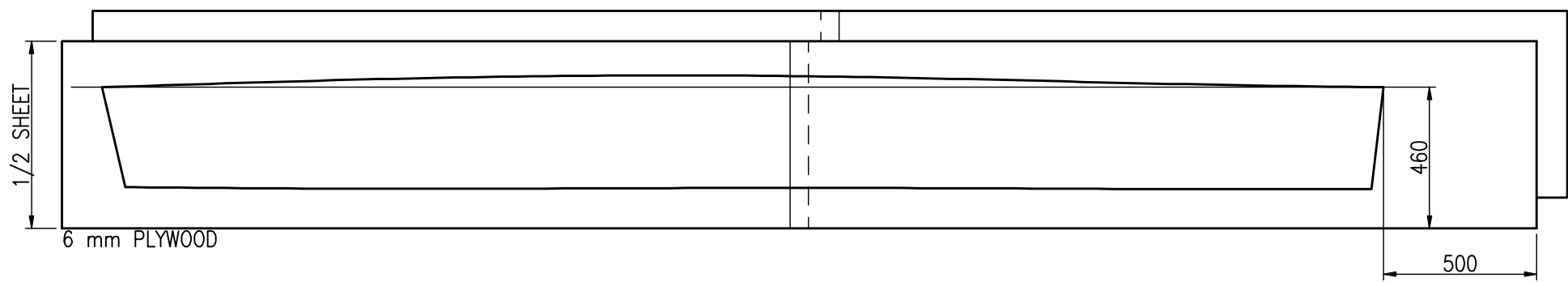
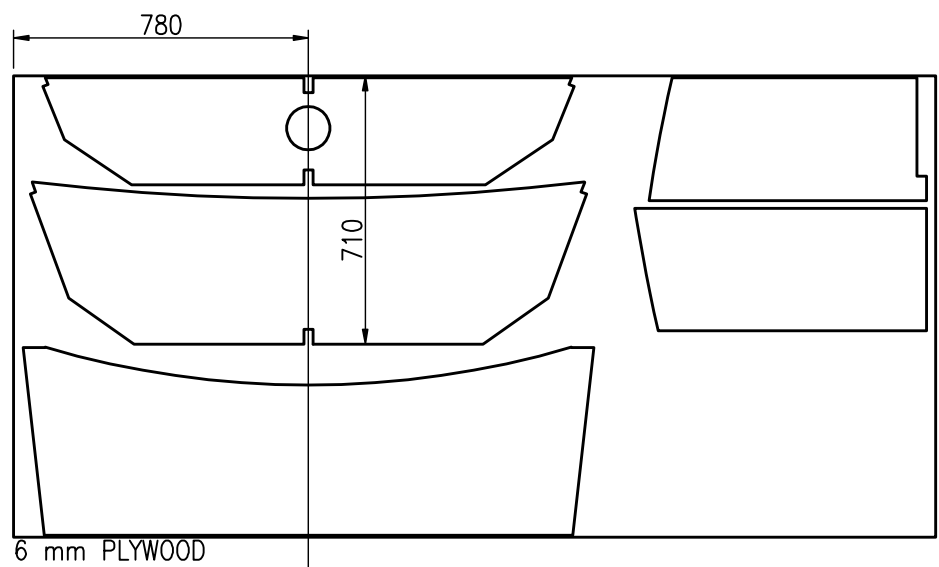


#### CUTTING PLAN

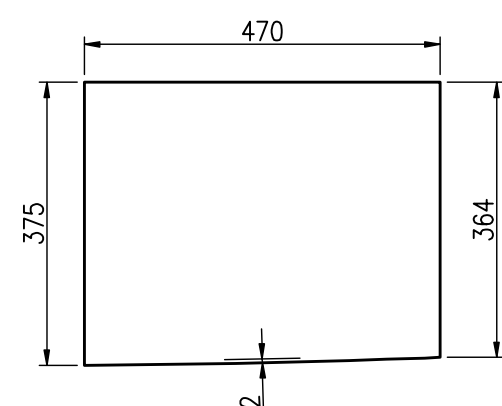
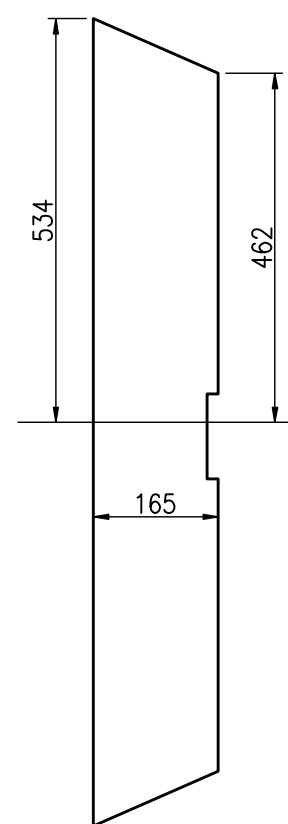
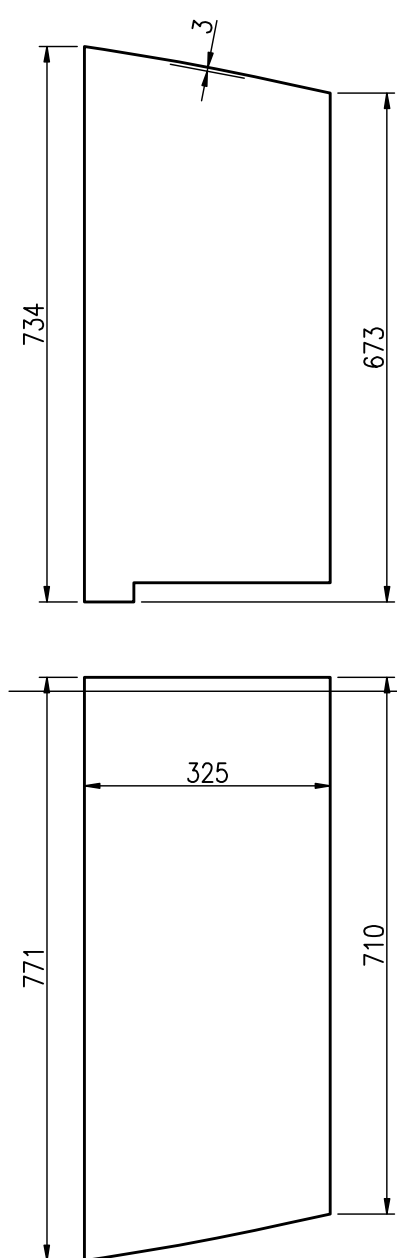
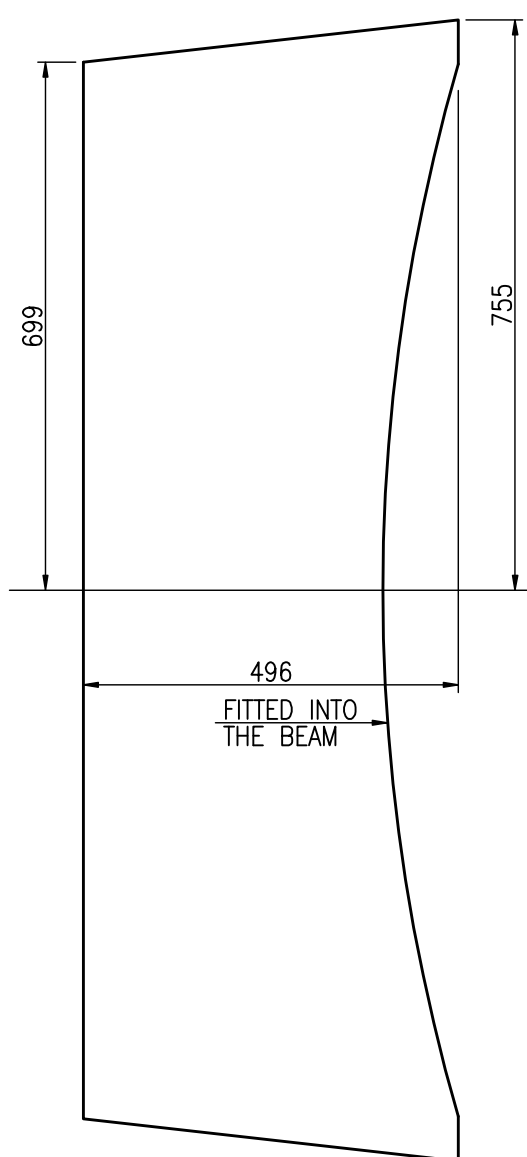
DRAWN FOR THE PLYWOOD SHEET SIZE 1.22 x 2.44 m

PLYWOOD SHEETS JOINED WITH A SCARF JOINT  
TEN TIMES AS LONG AS DEEP,  
THEN GLUED APPLYING PRESSURE

ALL OTHER SMALL PANELS  
CUT FROM SCRAPS



SIDE AND TRANSOM EDGE OF  
THE AFT SEAT AS WELL AS SIDE  
EDGES OF THE THWART AND MAST  
PARTNER 2-4 mm OVERSIZED  
FOR BEVELLING



4.0m

HULL PANELS  
SHEET 40.2/5, SIZE A1  
SCALE 1:10, 1:20

RADOSŁAW WERSZKO  
AUGUST 2006